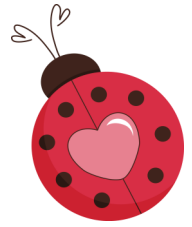




The LINK



February 2025

Please check our website for changes regarding any posted events.

“Stepping into God’s Love and Light”

A service of worship in the midst of heartache and grief
At times we all carry feelings of heartache, grief, worry, despair, or a deep desire for peace. **On February 16th at 4 pm** we invite all of you to gather for a special worship service that we might recognize our longing for God’s love to touch these tender areas of our heart. The service will have elements of music, song, poetry, painting and quiet. The artistic video that will be shared was created by poet Sarah Are and Lisle Gwynne Garrity, artist and film maker. Sarah shares this about the work: ***Even if you’ve never become an unwanted friend to grief, there is still room for you here. The poem lures each of us into a space of quiet inquiry to simply welcome the emotions that arise along the way instead of trying to fix or silence them.***

Everyone is welcome to attend and we hope you are able to do so. Feel free to reach beyond our church community and invite others as well!

Matthew 5:4 “Blessed are those who mourn, for they shall be comforted”.





ONLINE GIVING

"Honour the LORD with thy substance, and with the firstfruits of all thine increase:" Proverbs 3:9

easy · fast · secure

Electronic Giving is a convenient, consistent way to help our church year round – consider scheduling a recurring electronic contribution today. It's easy! You will no longer need to write our checks and prepare envelopes each week. Even when vacation, travel, illness or other circumstances prevent you from attending services, your electronic contributions will continue to be received on an uninterrupted basis. The church has a unique webpage that will allow you to sign up electronic giving and manage your secure account via VANCO. This webpage will enable you to make one-time or recurring gifts from your bank account or credit card. You can make changes to your account at any time and view a summary of your giving whenever you want. Your giving will be credited to your church giving number and included in the financial statements you receive from the church. Visit the LOUMC website at www.lakeorionumc.org for the link that you take you the LOUMC online giving webpage to set up your online contribution. If you have questions, please stop by and speak to Pat in the office.

THANK YOU!!!



The Baldwin Center was created as an outreach program of the Baldwin Avenue United Methodist Church in response to increasing poverty in the neighborhood. The congregation opened the Center's doors to provide food and recreation to children in June 1981. The Family Soup Kitchen, tutoring services and a shelter soon followed and the programs offered at the church grew from there.

In 2006, the congregation moved to Grace and Peace Community Church, and Baldwin Center continued offering human service programs as an independent 501(c)3. All of our programs are located on the former church's property at 212 Baldwin Avenue in Pontiac, except for the Clothes Closet, which is located one block south at 200 Baldwin Avenue

For over 40 years the Baldwin Center has been providing critical services to the under served population in the City of Pontiac, Michigan and the surrounding area. The Center feeds over 30,000 healthy meals per year in its community kitchen along with 25 other critical programs and service.

The Baldwin Center is deeply invested in the community we serve. ***Our vision is a thriving community with engaged citizens.*** Our promise is to provide the tools necessary for individuals and families in need to become vibrant, productive community members. ***We value honesty, respect, integrity and compassion.*** We believe in the strength of human dignity and the resilience of the human spirit as we continue to ***feed, clothe, educate and empower!***

The Baldwin Center was sent \$2,415.64 from our church committees: The Cardmakers (2 folks) donated \$600!! The United Methodist Men's group donated \$250, The United Women of Faith donated \$500, The Scrip committee donated \$500 and we received \$360 from the congregation.

If you wish to donate to the Baldwin Center, please mark your envelope/check "BALDWIN CENTER" or if you want to contribute directly to them send your checks to:

**The Baldwin Center
P.O. Box 420700
Pontiac, MI 48342**



February

28 DAY SCRIPTURE WRITING PLAN

EACH OF THE SCRIPTURES BELOW TAKES TEN MINUTES OR LESS TO COPY OUT. COMMIT TO SPENDING TEN MINUTES EACH DAY LISTENING TO GOD'S VOICE AS YOU SIMPLY COPY THESE TEXTS OUT OF YOUR BIBLE.

Week 1

- DAY 1- MARK 12:28-31
- DAY 2- LUKE 6:27-36
- DAY 3- ROMANS 12: 9-16
- DAY 4- ROMANS 13: 8-10
- DAY 5- 1 CORINTHIANS 13: 1-7
- DAY 6- 1 CORINTHIANS 13: 8-13
- DAY 7- EPHESIANS 4:1-6

Week 3

- DAY 15- DEUTERONOMY 11: 13-15
- DAY 16- DEUTERONOMY 11: 18-23
- DAY 17- MATTHEW 22: 37-40
- DAY 18- MATTHEW 5: 43-45
- DAY 19- JOHN 13: 34-35
- DAY 20- JOHN 14: 15-21
- DAY 21- ROMANS 5: 1-8

Week 2

- DAY 8- 1 PETER 4: 7-11
- DAY 9- 1 JOHN 4: 7-12
- DAY 10- 1 JOHN 4: 13-16
- DAY 11- 1 JOHN 4: 17-21
- DAY 12- JOHN 15:9-13
- DAY 13- JOHN 3: 16-21
- DAY 14- DEUTERONOMY 10: 12-19

Week 4

- DAY 22- ROMANS 8: 28-30
- DAY 23- MICAH 6: 8
- DAY 24- 1 JOHN 2: 15-17
- DAY 25- 1 JOHN 3: 1-3
- DAY 26- HEBREWS 10: 24-25
- DAY 27- DEUTERONOMY 6: 4-9
- DAY 28- LUKE 10: 25-28

Open my eyes that I may see wonderful things in your law.

Psalm 119:18



*Everyone needs a Little Jesus
in their life.*



VOLUNTEER FOR THE NURSERY:

This last summer we were blessed with volunteers to assist in the Nursery. We are in need of a volunteer to assist 1 time a month for the rest of the school year! The nursery typically has 2-5 children and activities are prepared for the caregiver to lead if time and little attention spans allow! Jasmine Sly, our Nursery Caregiver, is awesome to work and chat with! See Gail Vettrano or Pastor Linda if you are interested.



Thank
you 

Worship and the Arts wishes to offer a thank you for all who helped put away the Christmas trimmings on January 7th and a special thank you to our superstar custodian, Anthony for having everything organized for us.

RUMMAGE
SALE

Heads up - Sale will begin in March.

Jewelry and Furniture sale will be starting March 30th, April 5th and 6th. Collection of jewelry and furniture will be March 22nd from 9am until 1pm and 23rd from 11:30 am until 1 pm.

Rummage Sale items will be collected the week following Easter, starting Sunday, April 27th. And will begin with Members Only Sale on April 30th. Open sales will be May 1st, 2nd and 3rd. Please see Nancy Ochoa or any of the Worship and the Arts committee for more info. Please look forward to more information posting next month.

Did you know???

Did you know that we have bins to collect eyeglasses? They are located at the east and west entrance doors. The Lions Club takes your donations and sends them overseas to those who need them. Doesn't matter what frame, or what prescription, they will be checked and refurbished by their doctors. So look in those drawers and find those glasses that you don't use and pass them along to the Lions Club so they can pass them on for continued use. For any info, contact Jim Childers.



CAN FEBRUARY MARCH?

NO, BUT APRIL MAY.



Joko Jokes

***Vacation Bible School/Children's
Summer programming:***

***Mark your calendars for the week of July 13th to take
part in some summer time fun!***



SMALL GROUPS

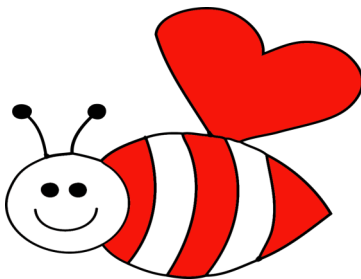
Sunday mornings Adult Sunday School is meeting in the Library off of the Fellowship Hall following worship service. The group is using the Adult Bible Studies series curriculum, and is open to anyone.

Grab a coffee from Fellowship Hall and join in.

On Monday mornings at 10:30, a small group of ladies study the Bible for anyone interested. Class members, who are willing, take turns facilitating each session. They meet in the Shalom Room.

On Monday evenings from 7:00-8:45, Disciple Bible Study is a small group available for anyone interested. They meet in the Overflow Room and ZOOM is available.

On Tuesday mornings at 10:30, a small group is available for anyone interested. Class members, who are willing, take turns facilitating each session. They meet in the Overflow Room and ZOOM is available.



Contributions Welcomed!

Sign up sheets are available posted in the hallway across from the church office. The fee for **altar flowers is \$33** for the arrangement and you take the flowers home with you to enjoy following the service.

There are also sign up sheets for Steeple lighting for \$10 a week, which helps with the electric utility bill; and livestream which pays for the broadcast of the worship services, by the week for \$30 or \$100 for the month.

We appreciate those who assist us in creating a welcoming sanctuary.

Thanks for those who have chosen to decorate our church with the altar flowers and other gifts:

January 12th - Altar flowers given in memory of our parents, Wilfred and Phyllis Wiseman's January birthdays. Given by Trudy Carney and Tom Wiseman.

January 19th - Altar flowers given in memory of Jean Greenhill. Given by her family.

January 19th - Altar flowers given in memory of Eric Keller's birthday. Given by his family.

January 19th - Altar flowers given in celebration of Sarah Hauxwell's 92nd birthday.

January 26th- Altar Flowers given in celebration of Charlie and Sandy Weaver's 58th anniversary on the 21st, and Sandy's birthday on the 18th.

January 26th- Altar Flowers given in memory of Charles Myers birthday on January 31st.

January 26th- Altar Flowers given in the celebration of life memorial service of Rev Jon Clapp's birthday.





February

Weekly Events:

Sunday

10:00am Worship
 11:00am Coffee Hour (FH)
 11:30am Adult Bible Study

Monday

9am-3pm Sunny Days
 10:30am Bible Study (Sh-106)
 5:30-6:30pm In person
 Community Meals
 7pm Disciple Class

Tuesday

10:30am Sermon Study
 7:00pm Choir Practice

Wednesday

8am Local Business LBN
 9am-3pm Sunny Days
 10am Bells Practice

Thursday

7:30am Rotary Club
 10-11am -Mom & Tot
 12pm--3pm Sunny Days

Friday

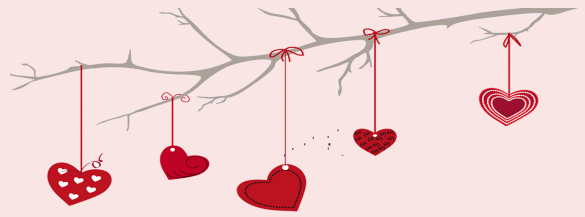
9am-12pm Sunny Days
 Office Closes at noon

Daily

8 PM-Narcotics Anon (123)

Sun	Mon	Tue
2 Groundhog Day	3 10 am –YOGA	4
9 UWF Bake Sale BAKE SALE	10 10 am –YOGA	11
16 4pm — Dark into Light Service	17 10 am –YOGA PRESIDENTS DAY	18 7pm - Pain Creek 4H
23	24 10 am –YOGA	25

2025



	Wed	Thu	Fri	Sat
				1 830 am UMM Lake House Breakfast 10am Widows Breakfast @ Leo's Oxford
	5	6	7	8 Bells Practice
	12	13 SPRC Trustees	14 	15
	19 Book Club 10am 	20 Finance	21 10 am Prayers & Squares meeting Prayers & Squares  The Prayer Quilt Ministry	22
	26	27 Church Council	28 East Winds District Mtg	March 1st East Winds District Mtg

JOIN US FOR YOGA!!!

HOLY YOGA

with Meeshy

Winter SCHEDULE

Monday Mornings

10:00AM-11:00AM

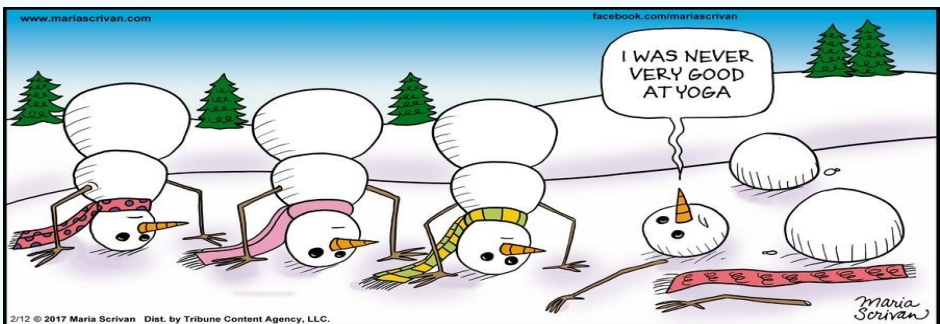
begins January 27th, 2025

**\$10
Drop in**

Lake Orion United Methodist Church

140 E Flint St, Lake Orion, MI 48362

Bring a yoga mat and a blanket (not required)



Be a HALL WALKER

8:30 - 3 Mon - Thurs

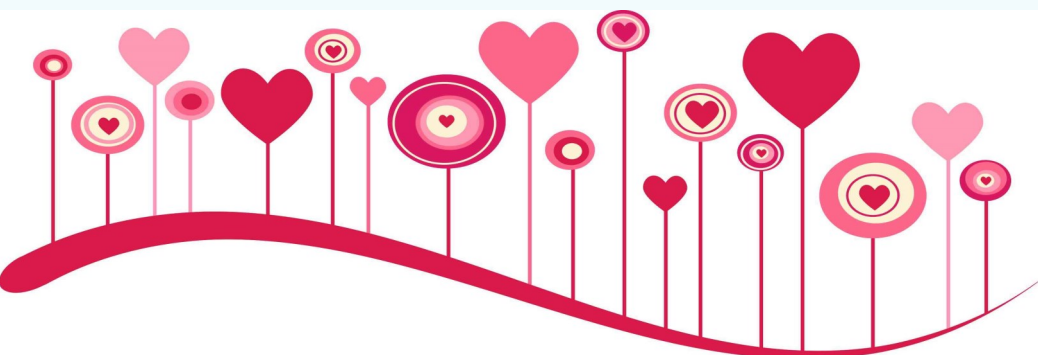
8:30 - 12 Fridays



Join Us! With the changing seasons, and nasty weather approaching, come here for your exercise!

Become a
LOUMC
Hall Walker

Don't drive to the mall; park here and walk the halls safely at LOUMC. Just let the office know when you're here, hang up your coat in Room 123 and get walking!





**The first ever cordless
phone was created by God.
God named it PRAYER.
It never loses it's signal and
you never have to recharge
it. You can use it anywhere.**

Amen

WOMEN



NAMI Metro SUPPORT GROUP

Adult discussion group for family member(s) or friend(s) of someone diagnosed with a mental illness. Share challenges and support each other. Learn about resources to get additional help. You're not alone. **Meets 2nd Wednesday of the month via ZOOM. To register: desteffes@charter.net**

Contact Debbie or Bryan Thom if you have any questions.
248.762.1141 or bryandebthom@gmail.com
NAMI – National Alliance on Mental Illness
<http://namimetro.org/>



Dear church family,

*Phil and I have had some trying times in recent months with broken ribs, pneumonia, and now a knee replacement. We are truly blessed to have such a wonderful church family to help us get through trying times. Thank you all so much for your prayers, cards, well wishes and delicious meals!
We love you and thank you all!
Ginny and Phil Lavender*



Many thanks to everyone who contributed to the Nut Sale which netted \$439.96 to be used for Missions. Special thanks to Ardis Pearce and Gayle Cater for promoting, selling and distributing the nuts!

It was decided at our January meeting, that due to the unknown winter conditions, our UWF will not be meeting during the February and March months. Our next meeting will be on April 10th at 10:00 a.m. All ladies are invited and encouraged to attend.

We are in the stages of planning our Annual Spring Luncheon – to be held offsite, so be sure to watch for further information in our monthly Link!

Most of all, don't forget to attend our Bake Sale on Sunday, February 9th during Fellowship time. We need bakers, so please help us out by baking and bringing your goods to Fellowship Hall at 9:00, prior to the service. And most of all, come down for a cup of coffee and purchase our goods!

Shalom!

Sandy Weaver, UWF Chair



A note for my LOUMC family:

Thank you for all the prayers, cards, calls, food for Jeff, and all the warm hugs. I truly appreciate the caring love you have shown to Jeff Sutherland and myself during his illness and passing. You are all wonderful, caring children of God.

***Love,
Patty Salisbury***



Mal 13

We received a lovely note from Karen Maschke letting us know that she is living with her daughter in Waterford. She's enjoying the jigsaw puzzles that she's able to borrow from the nearby Waterford Senior Center. If you'd like to send her a note, she's at 1065 Alhi St, Waterford 48328.

*You're in my Thoughts
and Prayers*



Exclusively at Satisfaction.com

***Our thoughts and prayers go out to all of
our families and friends.***

About People

Sharon Anton, Helen Barnes, Chloe Booth, Ruth Carlson, Linda Carpenter, Sally Dugas, Sue Erickson, David and Linda Fairchild, Virginia Ford, Susan Houle, Marilyn Joul, Janine Langedger, Joy Makedonsky, Sandy McSwain, Edward Naylor, Kareen Olson, Pat Parkin, Sherry Reseigh, Randy Riley, Bill Stark, Laurie Trafton, Ross Waite, Don White, Kathy Young, Community Meals Family, LOUMC Family Members & Friends.

Prayer Chain: Kathy McMinn
@ 248-770-8390 (text)
KathyMcMinn@cavtel.net

We at **Lake Orion United Methodist Church (LOUMC)** are a diverse, inclusive, caring, and Christ-like community.

Our mission is to connect people to God, one another, and the world, through engaging worship, ongoing spiritual development, intergenerational family ministries, relational mission, and joyful stewardship.

SUNDAY MORNING SERVICE & LIVESTREAM WORSHIP 10:00 AM

www.lakeorionumc.org

ELEVATOR available at the Slater Street entrance

OFFICE HOURS: Mondays – Thursdays: 9:00 AM - 3:00 PM

FRIDAYS: 9:00 AM - 12:00 PM

Office Closed Friday afternoons

LINK DEADLINE: February 17th for March LINK

Call the church office if you would like to be taken off OR added to the mailing list.

Phone: 248-693-6201, Email: Loumc1@lakeorionumc.org

www.facebook.com/lakeorionumc

STAFF

Senior Pastor

Rev. Larry Wik

734-735-1334 cell

larry.wik@lakeorionumc.org

Intergenerational Ministry

Coordinator

Rev. Linda Cochran

586-549-85-657 cell

LCochranrun@gmail.com

IMC@lakeorionumc.org

Music Director

Janice Hammond

janice.hammond@lakeorionumc.org

Children's Ministry Teacher

Madie Parker-Zurkan

mpzurkan@lakeorionumc.org

Nursery Coordinator

Jasmine Sly

Secretary

Pat Matthews

248-693-6201

loumc1@lakeorionumc.org

Janitor

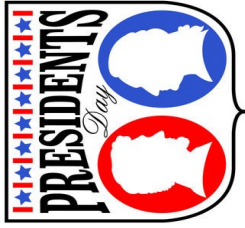
Anthony Graffeo



Lake Orion
 United Methodist Church
 140 E. Flint St.
 Lake Orion, MI 48362
 Return Service Requested

Non-Profit Organization
 U.S. Postage Paid
 Lake Orion, MI 48362
 Permit No. 24

FEBRUARY



Valentine's Day

