



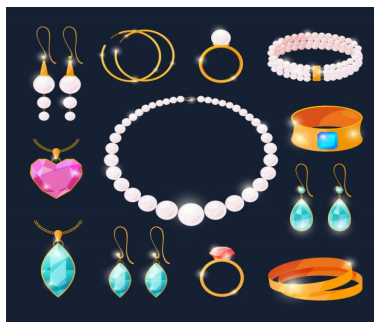
# The LINK

## March 2023

*Please check our website for changes regarding any posted events.*

## **Jewelry and Furniture Sale!**

**Drop-off Days: March 11th from 12 to 3 pm, and  
March 15th & 16th from 3-6 pm  
(no pick up available)**



### **Sale days only**

**Saturday, March 18th, 9-4**

**Sunday, March 19th, 12-2**

**Sunday March 26th. 12-2**

## **Jewelry and Furniture ONLY!!!**

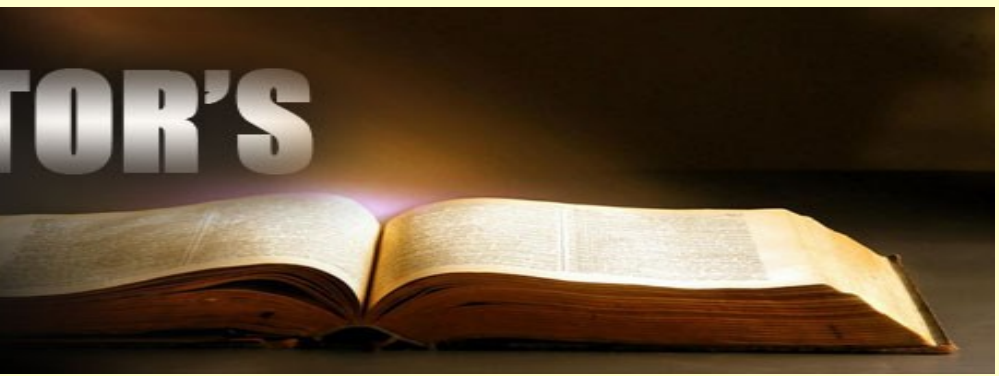


**Household Rummage Sale will be in April.  
Stay tuned for more info.**

# FROM THE PAST

## DESK

By the time you read this, I will have made my third presentation to yet another United Methodist Church around the future of the United Methodist Church in this period of time where some congregations are exploring disaffiliating from (officially leaving) the denomination. While we at LOUMC have no plans on leaving the denomination – our leadership was resoundingly behind the One Church Plan put forward by our bishops at the last General Conference – there are plenty of our folks who are curious as to what is going on in the broader denomination and what my presentation has been about. We are not alone. As I've talked to other clergy colleagues, I've found their congregations are in similar situations. They have no desire to leave, but they are curious as to what's going on, and would like to be able to answer questions raised by often inaccurate coverage in the media and on social media (imagine that, misinformation on social media!). So on Sunday, March 12<sup>th</sup>, after worship, we at LOUMC will host a simple lunch (free-will offering) at 11:30, followed by my UMC presentation at 12:30, for our congregation and for interested members from the Howarth, Paint Creek, and Thomas UM churches. Both the luncheon and the presentation will be in the Fellowship Hall. Sandy Weaver is coordinating the luncheon portion, so if you are interested in helping out, please feel free to contact her. Thanks, Sandy!



I'm still not exactly sure how I ended up in the mix making these presentations. But I must confess that it has been an unexpectedly rewarding experience. I have found the people, to whom I've had the privilege of presenting, open, gracious, and thoughtful. And the experience has also convinced me of the need for us to be in better conversation and collaboration as connectional congregations. I'm looking forward to our time together with friends from the Howarth, Paint Creek, and Thomas churches, and I pray this time of intentional fellowship will bear some much needed relational fruit.

We have a pretty good sense of how many to provide for in terms of LOUMC participants for the luncheon, and the other pastors are providing us with rough numbers from their congregations, so you won't need to RSVP *unless* you are planning to bring any extra guests with you – which we encourage. If you are bringing extra folks, either call the office or contact Sandy Weaver directly.

Hoping to see you there,

*Pastor Larry*

# **Get Ready to Rummage!!**

**As we did last year, our All Church Rummage Sale will be in TWO parts.**

**In March, we will offer jewelry and furniture in the Fellowship Hall. If you have items to donate, they may be dropped off on March 11th from 12 to 3 p.m., and March 15th and 16th from 3 to 6 p.m. Unfortunately, we do not have pick up or delivery services available this year.**

**The sale will be March 18th from 9 to 4 (Saturday) and after church services on Sundays March 19th and March 26th.**

**Part TWO of the Rummage Sale will be drop off April 16th from 12 to 3 and April 17th and April 18th from 9 to 5. This sale will NOT include furniture. Sale will begin April 19th 5 to 7 (Church Members only) and April 20th and 21st from 9 to 5. Saturday April 22nd will offer sales from 8 to 10 only, followed by cleanup. We are excited to offer this to our church and community - looking for lots of helpers to insure our success - hope to see you there!**

# RUMMAGE

The word "SALE" is spelled out using four large, colorful, 3D-style tags. The first tag is red with a white "S", the second is yellow with a white "A", the third is green with a white "L", and the fourth is blue with a white "E". Each tag has a white circular hole at the top with a string passing through it, suggesting they are hanging from something. The tags are slightly overlapping and have a soft shadow beneath them.

## ***Easter is April 9th***



Easter is coming! Once again the Worship in the Arts committee will be selling plants (***azaleas, daffodils, hyacinths, hydrangeas and Easter Lilies***) to adorn



our sanctuary on Easter Sunday. We will be set up in the Fellowship Hall to take orders or through phone calls or email. Contact Daryl DeBano at 248 622 1154 or at [dardebano@gmail.com](mailto:dardebano@gmail.com) or [ochoanancyj@gmail.com](mailto:ochoanancyj@gmail.com) if you wish to place an order.

We will be selling in the Fellowship Hall on Sundays – March 12th, March 19th, and March 26th.

Flowers will be available for pick up on Easter Sunday after the service.

Once you order your plants, you may drop off the check or cash to Pat in the LOUMC office. She has graciously agreed to collect for us! We would appreciate a timely payment so we can make sure all plants are covered. If you have a notation for the flowers, please include that with your payment. We will also need to know if this is a donation or you will be picking the flowers up.

Flowers will be available for pick up on Easter Sunday following service.





photo at Grace Senior Center of the  
Valentine card creators and deliverers



Hello Congregation,

This is a short update to you from your Finance Committee to let you know how we ended 2022. If you recall from the fall update, through the end of September we had spent about \$75,000 more than we had received. Thanks to your increased giving through the month of December that deficit was reduced to just under \$9,400. That's great news, though it still means that in order to pay all the bills for 2022, we had to take that \$9,400 from our reserve account.

Looking to 2023, the Church Council has approved a budget that should enable us to meet our financial commitments. Of course, that still depends on the support of our church, through folks like you and me continuing to give at regular intervals in alignment with what God calls us each to share.

Thank you for faithfully supporting the great ministries of our church. Those ministries reach far beyond us personally and support both our local community and the work of God around the world.

Sincerely,  
Don Tyrrell,  
LOUMC Finance  
Chair



**FINANCE**  
**COMMITTEE**

**Memorial Walk and Garden**



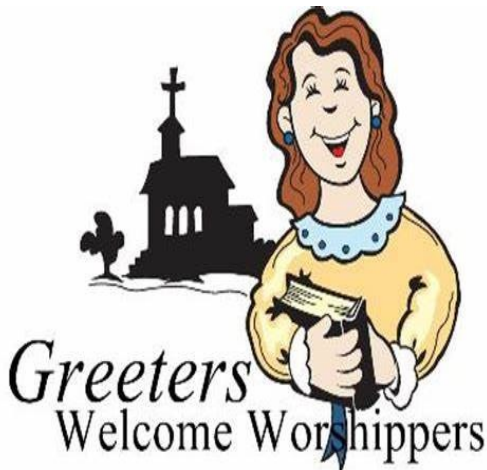
Ten years ago, in celebration of LOUMC’s 140th Anniversary, a memory garden/walk was created. The memory walk includes engraved bricks that honor the memory of departed family and friends. The cost of each 8” x 4” brick is \$50, which includes the lettering (14 spaces/3 lines) and placement in the memory walk. Work on the garden/walk begins in spring. Simply fill out the form and place cash or check (made out to LOUMC with “Memorial Brick” on the memo line) in an envelope. For multiple brick orders, please complete one grid section for each brick. One check may be written for multiple orders. *You may mail the form and payment OR drop it in the office mailbox at the Slater Street entrance (the office has the only key).* Orders will continue on an ongoing basis. Thank you for supporting LOUMC’s Memory Garden and Walk. Please contact Kathy McMinn via text at 248-693-1895 or [kathymcminn@cavtel.net](mailto:kathymcminn@cavtel.net) if you have any questions. Order forms are available at church.

1	2	3	4	5	6	7	8	9	10	11	12	13	14




## **Greeters Needed**

We need your friendly faces to greet folks as they come to Sunday services. We have basically three doors that people enter, and if they're new they don't know where to go. Would you like to be that person to tell folks where to go?? Once they are here, we can invite them to coffee hour in Fellowship Hall, or where the Nursery is located for those young families. We just need your smiling faces to welcome those people, and to say hello to all your friends and families joining us. You will need to arrive about 1/2 hour before the service begins, and then head upstairs for the service. Please see Kathy McMinn or send her a text at Kathy McMinn @ 248-770-8390 (text) [KathyMcMinn@cavtel.net](mailto:KathyMcMinn@cavtel.net)



## **Did you know???**

Did you know that we have bins to collect eyeglasses? They are located at the east and west entrance doors. The Lions Club takes your donations and sends them overseas to those who need them. Doesn't matter what frame, or what prescription, they will be checked and refurbished by their doctors. So look in those drawers and find those glasses that you don't use and pass them along to the Lions Club so they can pass them on for continued use. For any info, contact Jim Childers.





# March

## Weekly Events:

### Sunday

10:00am Worship

11:00am Coffee Hour (FH)

11:30am Adult Bible Study

6 pm Youth Café

### Monday

9-3 Sunny Day Preschool

10:30am BibleStudy(Sh-106)

5:30-6:00pm Drive Thru

Community Meals

### Tuesday

Book Study 10:30am

7pm Choir practice

### Wednesday

9-3 Sunny Day Preschool

Sermon Review 10:30am

### Thursday

7:30am Rotary Club

1 pm Bell practice

10-11 Sunny Day

12-3 Sunny Day Preschool

### Friday

Office Closes at noon

9-12 Sunny Day Preschool

### Daily

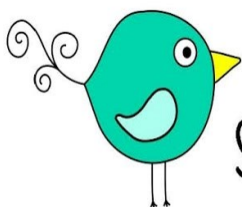
7 PM-Narcotics Anon (123)

Sun	Mon	Tue
		
5	6	7
<b>Communion for Lent</b>		<b>Paint Creek 4</b> 
12	13	14
<b>Communion for Lent</b> <b>Welcome Luncheon UMC Churches</b>		
19	20	21
<b>Communion for Lent</b> <b>Furniture &amp; Jewelry SALE</b>		
26	27	28
<b>Communion for Lent</b> <b>Furniture &amp; Jewelry SALE</b>		

# h 2023

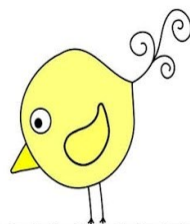


	Wed	Thu	Fri	Sat
	1	2	3	4 8 am UMM Lake House Breakfast  
4-H 	8	9  United Women in Faith  UMWF 10am Trustees SPRC	10	11 Furniture & Jewelry SALE Drop off 12-3pm
	15 Drop off 3-6pm Book Club 10am 	16 Drop off 3-6pm Finance	17 	18 Furniture & Jewelry SALE
	22	23 Church Council	24	25
	29	30	31	



# March

## Scripture Writing Plan



Each of the scriptures below takes ten minutes or less to copy out. Commit to spending ten minutes each day listening to God's voice as you simply copy these texts out of your Bible.

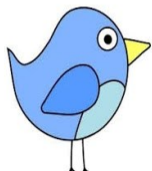
Day 1- Joel 2:12-14  
Day 2- Joshua 1:5-9  
Day 3- James 1:2-8  
Day 4- James 1:9-12  
Day 5- James 1:13-18  
Day 6- Ephesians 2:4-10  
Day 7- Ephesians 4:22-28

Day 8- Ephesians 4:29-32  
Day 9- Romans 15:1-6  
Day 10- Psalm 91:1-4  
Day 11- Psalm 91:5-8  
Day 12- Psalm 91:9-13  
Day 13- Psalm 91:14-16  
Day 14- Galatians 5:13-15

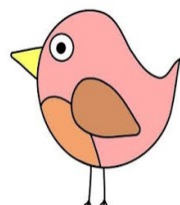
Day 15- Galatians 6:1-6  
Day 16- Galatians 6:7-10  
Day 17- Psalm 62:1-5  
Day 18- Psalm 62:6-10  
Day 19- Psalm 20:1-5  
Day 20- Psalm 61:1-5  
Day 21- Isaiah 43:1-7  
Day 22- Hebrews 6:13-16  
Day 23- Hebrews 6:17-20  
Day 24- Matthew 5:13-16  
Day 25- 1 Thessalonians 5:12-15  
Day 26- 1 Thessalonians 5:16-22  
Day 27- 1 Thessalonians 5:23-28  
Day 28- Matthew 21:21-22

Day 29- James 3:13-15  
Day 30- James 3:16-18  
Day 31- Choose Your Own Verse

Open my eyes that I may  
see wonderful things in your law.



Psalm 119:18





# FEASTING ON HIS PRESENCE

## A LENTEN BIBLE READING GUIDE

Day 1 begins on Ash Wednesday and Day 40 ends on Holy Saturday.  
Taking Sundays off.

Day 1	Isaiah 6:1-7	Day 21	Malachi 4:6
Day 2	Psalms 139	Day 22	Psalms 122
Day 3	Revelation 4	Day 23	Isaiah 9:1-7
Day 4	Psalms 19	Day 24	Isaiah 7:10-16
Day 5	Isaiah 11:1-10	Day 25	Luke 1:26-38
Day 6	Psalms 27	Day 26	Luke 1:46-55
Day 7	Lamentations 3:19-26	Day 27	Luke 2:1-14
Day 8	Psalms 30	Day 28	Isaiah 61
Day 9	Isaiah 43:1-13	Day 29	Luke 4:14-21
Day 10	Psalms 136	Day 30	Psalms 95
Day 11	Job 38: 1-11	Day 31	John 10:11-18
Day 12	Psalms 42	Day 32	Psalms 23
Day 13	Job 38:12-38	Day 33	Zechariah 9:9-10
Day 14	Psalms 16	Day 34	John 12:12-19
Day 15	1 Kings 19:11-13	Day 35	John 16:5-14
Day 16	Psalms 34	Day 36	Isaiah 53
Day 17	1 Chronicles 29:11-13	Day 37	Matthew 27:33-54
Day 18	Psalms 121	Day 38	Psalms 22
Day 19	Exodus 15:1-21	Day 39	Mark 16
Day 20	Psalms 103	Day 40	Revelation 21:1-7

*www.Shelemah.com*





**SCRIP** Please think about using the Scrip Program at LOUMC to purchase gift cards. We are able to purchase hundreds of gift cards at a discount for you to purchase at face value. Major retailers, restaurants, gas stations, hotels and movie theatres are available in different denominations. This program benefits many ministries of the church, the General Fund and outreach such as Community Assistance and Missions. Contact [www.shopwithscrip.com](http://www.shopwithscrip.com) for a complete list of participating retailers, or Trudy Carney at 248-693-2558 [trudycarney@aol.com](mailto:trudycarney@aol.com).

### **Year Round Stewardship**

Electronic Giving is a convenient, consistent way to help our church year round – consider scheduling a recurring electronic contribution today. It's easy! You will no longer need to write out checks and prepare envelopes each week. Even when travel, illness or other circumstances prevent you from attending services, your electronic contributions will continue to be received on an uninterrupted basis. Visit the LOUMC website at [www.lakeorionumc.org](http://www.lakeorionumc.org) for the link that will take you to the LOUMC giving webpage to set up your online contribution. **(FYI - Using PayPal or your credit card for any contributions - just be aware that a percentage fee is taken from those contributions.)**



Secure Payments By



**NO PAYPAL ACCOUNT NEEDED!**

# **A HUGE THANK YOU**

To everyone who supported the Valentines Bake Sale  
That we had on Sunday. Thank you to the bakers, buyer  
And the many cookie monsters who enjoyed our  
homemade Goodies.

Plus we had an abundant of cookies that we donated to  
the Monday Night Meals people who drive up.

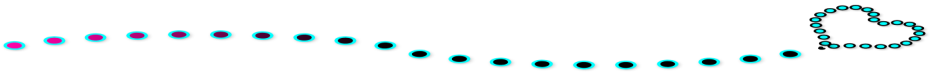
A second plus...the proceeds from the sale were \$677.

Which all goes to the Monday Night Meals funds.

It was a Win! Win! Win!

Thank You Church Family!

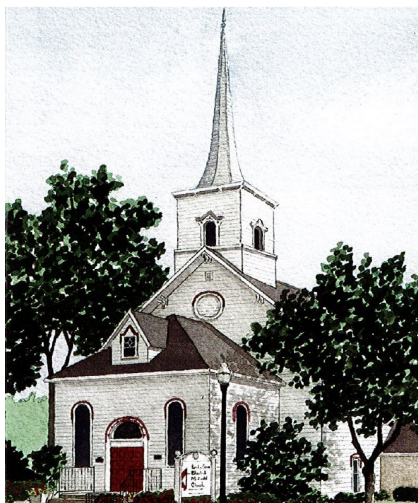
*A rousing thank you to all who helped fill the valentine  
bags for Center 4 Success. You were wonderful and the  
students were so, so excited. Your kindness and  
generosity are well appreciated.*



*A very grateful thank you for the meals and cards that  
Sherry received during her time at home. I thank each  
and every one of you for all your prayers and good  
wishes.*

*Ralph Reseigh*





**Notecards are available**

**We have these 4 x 6 blank notecards for you to purchase. They are available at the Scrip table in Fellowship Hall during coffee hour. Cards are \$3 each or 4 for \$10. Profits are for the Worship and the Arts committees.**

## **ARE YOU A WIDOW OR A WIDOWER?**

Join us! We meet every Tuesday at Collier Lanes in Oxford at noon. Come bowl or go out for lunch!



For more information call  
Joe (248) 693-2454 or  
Nadine (248) 475-9036

## **NAMI Metro SUPPORT GROUP**

Adult discussion group for family member(s) or friend(s) of someone diagnosed with a mental illness. Share challenges and support each other. Learn about resources to get additional help. You're not alone.

**Meets 2<sup>nd</sup> Wednesday of the month via ZOOM. To register: [desteffes@charter.net](mailto:desteffes@charter.net)**

Contact Debbie or Bryan Thom if you have any questions. 248.762.1141 or

[bryandebthom@gmail.com](mailto:bryandebthom@gmail.com)

**NAMI – National Alliance on Mental Illness**

<http://namimetro.org/>



## **Contributions Welcome!**

Sign up sheets are available posted in the hallway across from the church office. The fee for altar flowers is \$30 for the arrangement and you take the flowers home with you to enjoy following the service.

There are also sign up sheets for Steeple lighting for \$20 a week, which helps with the electric utility bill; and livestream which pays for the broadcast of the worship services, by the week for \$30 or \$100 for the month.

We appreciate those who assist us in creating a welcoming sanctuary.

*Thanks for those who have chosen to decorate our church with the altar flowers and other gifts:*

**February 12th** - Altar flowers given in honor of Paulie Egner's birthday. Given by Kathie Blaylock.

**February 12th** - Livestream given by Kathie and Jon Blaylock.

**February 19th** - Altar flowers and Steeple Lighting given by Charlotte Brown as a thank you for all the cards, prayers and thoughts for her after her fall.

**February 19th** - Altar flowers in honor of Erin Keener, given by Sharon and Dennis Keener.





***Our thoughts and prayers go out to all of  
our families and friends.***

## **About People**

Jyl Acker, Sharon Anton, Helen Barnes, Chloe Booth,  
Linda Carpenter, Howard Daenzer, Sr., Gloria Dunning,  
Bob and Sue Erickson, David and Linda Fairchild, Janine  
Langegger, Joy Makedonsky, Joyce Marker, Maxine  
McManus, Sandy McSwain, Patti Miechiels, Edward  
Naylor, Bill and Kareen Olson, Pat Parkin, Sherry Reseigh,  
Randy Riley, Joe Rowden, Karen Schadel, Carol and Bill  
Stark, Laurie Trafton, Roger Waite, Ross Waite, Kathy  
Young, Community Meals Family, LOUMC Family  
Members & Friends.

**Prayer Chain:** Kathy McMinn @ 248-770-8390 (text)  
KathyMcMinn@cavtel.net



We at **Lake Orion United Methodist Church (LOUMC)** are a diverse, inclusive, caring, and Christ-like community.

Our mission is to connect people to God, one another, and the world, through engaging worship, ongoing spiritual development, intergenerational family ministries, relational mission, and joyful stewardship.

**SUNDAY MORNING SERVICE &  
LIVESTREAM WORSHIP 10:00 AM**

[www.lakeorionumc.org](http://www.lakeorionumc.org)

**ELEVATOR** available at the Slater Street entrance

**OFFICE HOURS: Mondays –Thursdays: 9:00 AM - 3:00 PM**

**FRIDAYS: 9:00 AM - 12:00 PM**

**Office Closed Friday afternoons**

**LINK DEADLINE: March 15th for April 2023 LINK**

Call the church office if you would like to be taken off the mailing list.

Phone: 248-693-6201, Email: [Loumc1@lakeorionumc.org](mailto:Loumc1@lakeorionumc.org)

[www.facebook.com/lakeorionumc](http://www.facebook.com/lakeorionumc) [www.lakeorionumc.org](http://www.lakeorionumc.org)

## **STAFF**

**Senior Pastor**

Rev. Larry Wik

734-735-1334 cell

[larry.wik@lakeorionumc.org](mailto:larry.wik@lakeorionumc.org)

**Nursery Director**

Brenda Brubaker-Ulery

248-520-0527 cell

[BKBU@lcomcast.net](mailto:BKBU@lcomcast.net)

**Intergenerational Ministry**

**Coordinator**

Rev. Linda Cochran

248-693-6201

[IMC@lakeorionumc.org](mailto:IMC@lakeorionumc.org)

**Secretary**

Pat Matthews

248-693-6201

[loumc1@lakeorionumc.org](mailto:loumc1@lakeorionumc.org)

**Music Director**

Janice Hammond

[janice.hammond@lakeorionumc.org](mailto:janice.hammond@lakeorionumc.org)

**Janitor**

Anthony Graffeo



*Lake Orion*  
United Methodist Church  
140 E. Flint St.  
Lake Orion, MI 48362  
Return Service Requested

Non-Profit Organization  
U.S. Postage Paid  
Lake Orion, MI 48362  
Permit No. 24

MARCH



St. Patrick's Day



In Like a Lion...

MARCH  
Out Like a Lamb

